

# HOLSWORTHY MARKET REPORT

## Wednesday 11 December 2024

**EVERY WEDNESDAY**

**Gates open 6am**

### SALE TIMES

09:45 am - Draft Ewes followed by Finished Lambs

10:30 am - Store Lambs

09.45 am - Calves followed by Stirks

11:00 am - Store Cattle followed by Finished & OTM Cattle

11:00 am - Dairy Cattle



**Another great entry of rearing calves forward here at Holsworthy.  
416 sold to a sharp trade from start to finish**

# 871 LAMBS, 138 DRAFT EWES AND RAMS

09:45am

Auctioneer: Steve Prouse - 07767 895366

Much larger entry with a lot of lean lambs on offer which reflected in the average. Good meat lambs topped at 314ppk for 39kgs £122.50 from C Drummond, Inwardleigh. Lawrence Wickett, Bradworthy realised 313ppk for his 46.4kgs £145. There were four vendors at 311ppk. Several pens of heavies over £150 to a top of £160 from two vendors, Orleigh Farms, Bideford and Bellamy & Crocker, Tavistock.

## DRAFT EWES

A much faster trade with an overall average of £177. Suffolk x ewes from Kevin Davey, Northlew topped the day at £149. Orleigh Farms, Bideford made £148 for their Texel x ewes. Mules to £134. Grazing ewes from £90 to £118.

## 130 STORE LAMBS

Strong trade with the top being £121 from Eric Tucker, Buckland Brewer. Three vendors also realised £120.

WEIGHT	TOP		AVERAGE	
	Per head	P/Kg TLW	Per head	P/Kg TLW
<b>LAMBS</b>				
32.1 - 39	122.50	314	109.25	292.6
39.1 - 45.5	137	311	127.11	296.5
45.6 - 52	151	313	143	294.3
52 +	160	289	148.50	275.7
<b>Overall</b>	160	313	139	296.2
<b>Ewes</b>				
Light	130		115	
Heavy	149		137	
<b>Rams</b>	130	-	128	-



**Entries invited for next week, please contact Steve on 07767 895366  
Fieldsman Ryan Walter on 07534 166251**



Dairy, Beef and Sheep Clubs  
Data Analysis

Competitively priced farm medicines  
Live stock fertility testing and advice

Vet Tech services  
Disease Prevention

Holsworthy Stratton Bradworthy Camelford

[www.penbodevets.co.uk](http://www.penbodevets.co.uk)



## 416 CALVES & WEANED CALVES – 09:45am

Auctioneer: Tim Kivell - 07788 281900

A massive December entry of 416 calves selling to a solid trade right through with some medium calves looking very well sold.

### WEANED CALVES

A handful of weaned calves forward selling to £570 x7 (4 months) for a wonderful bunch of reared Blue steers presented by BH & EA Worth travelling down from Ilfracombe who went on to sell heifers very well at £500. Angus steers from the same good farm also reached £500. Younger Angus steers to £372 (3 months) in from IM Mitchell of St Winnow who went on to sell heifers well at £300 (3 months).

### MILK CALVES

An outstanding Charolais bull topped this section at £498 in from FW Dymond of

Shebbear with other Charolais bulls selling well to £418 from LJ Goaman & Sons of Hartland, £362 for J Sillifant, Pancrasweek with 7 Charolais bulls over £300. Blue bulls reached £492 for a remarkable sort in from R & S Home, East Putford. More blue bulls to £422 for JR & A Down from Whiddon Down, £405 Angus Heyward of Coryton, £388 Tim Issac of Hollacombe, £382 Steve Furse of Ashwater, £380 WD Medland of Whitstone, £372 AW Pomeroy & Son of West Putford and £370 for Colgrove Partnership of St Ewe with an impressive 47 Blue bulls over £300. Limousin bulls sailed away to £400 for TN & M Morrow of Truro with other Limousin bulls to £400, £395 x2, £385 x2 all in from PH Collins Partnership, Holsworthy and £378 for Chris Bond of Buckland Brewer. Simmental bulls to £322 from J Sillifant. Native bulls sold to a wonderful trade with Herefords selling to £372 from Angus Heyward, £340 from Lucy Vanstone of Chilsworthy and £300 for HI Angwin & Sons of Bodmin who sold Angus to £342, £308 and £302 with other Angus bulls selling well to £308 for David Grigg, Monkleigh. Fleckvieh bulls to £350 for Peter Warrington, Torrington who sold Devon bulls to £348. An outstanding blue heifer topped at £460 for MJ Hopper of Whitstone with other Blue heifers to £330 for WD Medland, £325 for JR & A Down and £308 for Martin Gorst of North Petherwin. Limousin heifers to £400 for PH Collins Partnership who sold another one at £300 with other Limousin heifers to £330 for TN & M Morrow. Hereford heifers sold well to £360 from the same farm with others to £230 from HI Angwin. Simmental heifers saw plenty of demand reaching £280 and £255 for RG & LA & SR Wearing of Tavistock. A wonderful run of Charolais heifers sold very well to £280, £268, £255, £248 x2, £240 x2 and £220 all from LJ Goaman & Sons.

### DAIRY SIRED CALVES

34 Friesian bulls averaged an unbelievable £120 selling to a top of £250 for J Whitehead of St Keyne followed by £250 also for TN & M Morrow, £230 for JR & A Down, £175 for Peter Warrington and £158 for Angus Heyward.

**Please pre enter calves so we can inform potential buyers of anticipated numbers. Text, call or WhatsApp Tim Kivell 07788 281900**

### Attention Calf Vendors

Due to the continued high volume of calf sales at Holsworthy Market we have decided to run a calf / stirk market on **Monday 23rd December 2024**, with the sale commencing at 9:45am as usual.

Please ensure all calves / stirks are entered prior to arrival to enable us to notify buyers of the correct entry.

*Many thanks Tim Kivell*

Please call the office to book in calves on 01409 253275

MILK CALVES						
BREED	BULLS			HEIFERS		
	No	Top	Ave	No	Top	Ave
<b>A. Angus</b>	37	342	213	45	330	133
<b>Limousin x</b>	13	400	363	5	400	274
<b>British Blue</b>	84	492	276	76	460	208
<b>Hereford x</b>	24	372	211	29	360	101
<b>Charolais x</b>	9	498	354	13	280	237
<b>Friesian</b>	34	250	121	-	-	-
<b>Simmental</b>	3	322	276	3	280	260
<b>Welsh Black</b>	4	230	203	-	-	-
<b>Fleckvieh</b>	1	350	350	-	-	-

**130 STORE CATTLE – 11:00am**  
Auctioneer: David Kivell – 07899 960272

A smaller number than expected due to a few cancellations saw a fierce trade from start to finish. Only a handful of older cattle saw steers to a top of £1500 for two 19mth Charolais from Messrs G & G Heal, Umberleigh, who topped the heifers at £1480 for two 22mth Charolais. Friesian steers to £1400 from Mr GRM Hill, Lamerton who sold others at £1220.

A good entry of younger stores saw a 15mth British Blue from Mr Rj & Mrs HJ Vanstone, Sutcombe at £1380, others £1260, £1160 and £1140. Heifers from the same farm £1135 (5) and £1055 (5). Limousin steers to £1100 for two 14mth steers from Messrs T & J Adams, Torrington. Limousin heifers from the same farm £1040. Best of the Natives this week was £1110 for three at 15mths from Mr Rj & Mrs HJ Vanstone, Sutcombe. **Many more cattle required to meet demand.**



**OTM COWS**

Top on the day was 143ppk for a non FA 926 kilo South Devon cow from Mr P Marjason, Torrington realising £1324.

**To book in stores or arrange an on farm valuation, Tel: Alec Shadrick 07767 896136, Charlie Kivell 07794 000325 or Holsworthy Office 01409 253275**

**LEVEL UP YOUR FARMING SKILLS WITH TORCH VETS!**

Ready to gain hands-on expertise and stay ahead in the farming? Join our Torch Farm Skills Courses – designed to empower you with practical knowledge, from animal health to farm management and everything in between!

**Why join?**

- Industry-leading experts
- Tailored, interactive sessions held in small groups for maximum tuition time.
- Skills to boost your farm's productivity
- With courses in AI, Foot trimming, Mastering Medicines, calf rearing, Udder health, Lambing courses and so much more there is something for everyone whether you are new to the industry or fancy updating your knowledge!

Don't miss out on this opportunity to invest in your future.

Register your interest today for 2025 dates by emailing [events@torchvets.com](mailto:events@torchvets.com)



**Independent vets, dedicated care**

Bideford  
01237 870456

Holsworthy  
01409 331007

South Molton  
01769 610000

Ilfracombe  
01271 879516



[torchfarmvets.com](http://torchfarmvets.com)  
[info@torchfarmvets.com](mailto:info@torchfarmvets.com)

**FORTHCOMING DAIRY SALES**

**WEDNESDAY 18<sup>TH</sup> DECEMBER - HOLSWORTHY LIVESTOCK MARKET**

Sale of approx. 80 Dairy Cattle. To include 50 quality fresh calvers from regular vendors. PLUS a consignment of 14 In Calf Heifers due January/February and a consignment of 15 pedigree Holstein Friesian Bulling Heifers.





## **ATTENTION ALL FARMERS / HAULIERS**

We have had a visit from Trading Standards who have asked us to remind all farmers / hauliers that the Cleaning and Disinfection section of a market entry form (Vendor Declaration on the reverse side of the entry form) **MUST** be completed and handed in upon arrival at market.

If the Cleaning and Disinfection section is not completed, we have been informed that a follow up inspection on farm is likely to take place.

We urge all farmers / hauliers to be vigilant when completing their market entry forms and ensure that all relevant information has been completed and signatures made.

We thank you for your co-operation in this matter.

**CHRISTMAS SALES OF OVEN READY POULTRY!**

**THURSDAY 19<sup>TH</sup> DECEMBER - HALLWORTHY - 11:30AM**  
**FRIDAY 20<sup>TH</sup> DECEMBER - EXETER - 10:00AM**  
**MONDAY 23<sup>RD</sup> DECEMBER - HOLSWORTHY - 5:00PM**

ENTRIES INVITED TO

Holsworthy – 01409 253275 /  
holsworthymarket@kivells.com

Exeter – 01392 251261 / livestock@kivells.com

Hallworthy – 01840 261261 / hallworthy@kivells.com

**KIVELLS**  
www.kivells.com

Your **Rural Professional Team** here at Kivells are experts in a wide range of agricultural and property issues including:

- Valuations
- Compulsory Purchase and Compensation Claims
- Countryside Stewardship and Grants (SFI)
- Landlord and Tenant
- Rural Planning
- Rural Property Management
- Telecommunications
- Renewables



Contact your Rural Professional Team today for expert advice



Thomas Rattray  
BSc (Hons) MRICS FAAV  
Director  
07813 016804



Mark Bromell BSc (Hons)  
MRICS FAAV FLAA  
Director  
07966 430001



Mark Bunt  
BSc MRICS FAAV  
Director  
07879 640970



Claire Quirk  
BSc (Hons) MRICS FAAV  
Rural Chartered Surveyor  
07789 980204



Ian Caunter BSc (Hons)  
MRICS FAAV FLAA  
Rural Chartered Surveyor  
07813 068935



Phoebe Millar  
BSc (Hons) MRICS FAAV  
Rural Chartered Surveyor  
07741 312305



# 2025 SALE DATES



SATURDAY 1ST FEBRUARY

SATURDAY 1ST MARCH

SATURDAY 5TH APRIL

SATURDAY 10TH MAY

SATURDAY 14TH JUNE

SATURDAY 5TH JULY

SATURDAY 2ND AUGUST

SATURDAY 6TH SEPTEMBER

SATURDAY 4TH OCTOBER

SATURDAY 1ST NOVEMBER

SATURDAY 6TH DECEMBER In addition to on-farm sales held throughout the year covering the whole of the South West

Monthly Live & Online Collective Sales  
of Machinery, Vehicles & Implements

*Holsworthy Market*

*See our website for more info!*





# Renew your VAN Number

EU legislation requires a Veterinary Attestation Number (VAN) or Farm Assurance status to sell livestock for slaughter for export outside of the UK.

VAN numbers expire every 12 months  
**Don't forget to renew.**

Speak to your local Veterinary Practise to renew.

Share your new VAN number with your mart.

ONE.LIVE.HUB



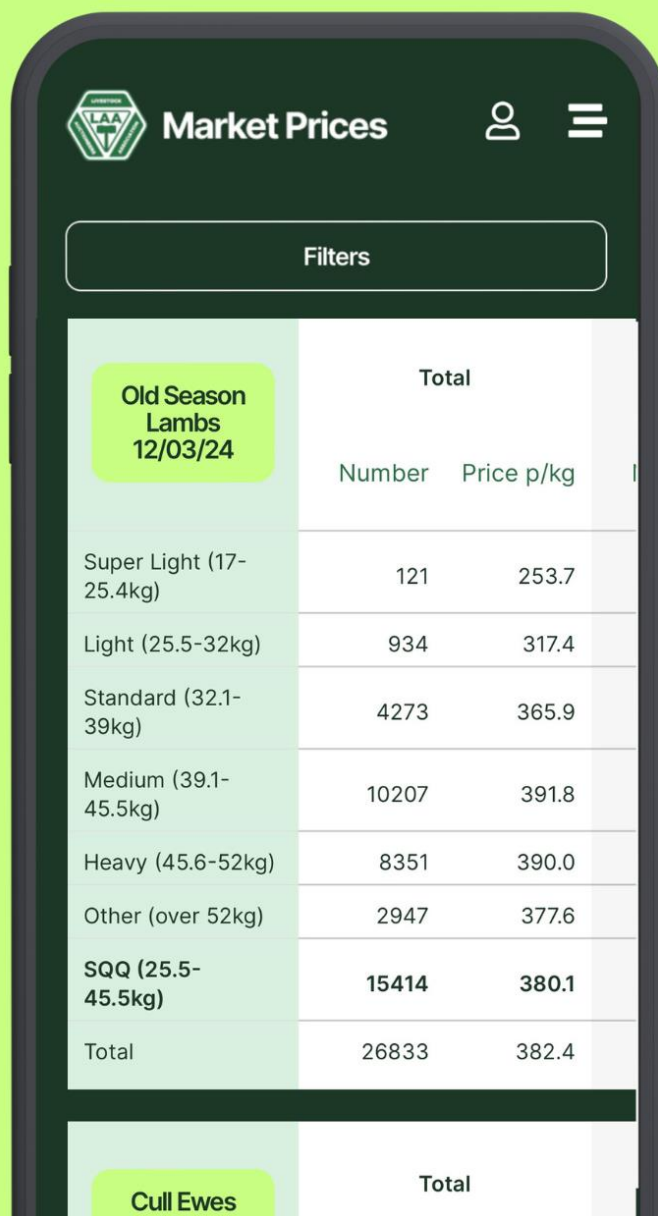
# Market Prices

# Mart Customers get Daily Prices for free

Sign up or upgrade  
your plan with your  
mart account  
number\* for market  
prices 12pm & 8pm  
daily, for free.

\*Usually found on your sales  
invoice or statement.

[marketprices.laa.co.uk](https://marketprices.laa.co.uk)



The screenshot shows the 'Market Prices' app interface. At the top, there is a header with the LAA logo, the title 'Market Prices', and icons for a user profile and a menu. Below the header is a 'Filters' button. The main content is a table with the following data:

Old Season Lambs 12/03/24	Total	
	Number	Price p/kg
Super Light (17-25.4kg)	121	253.7
Light (25.5-32kg)	934	317.4
Standard (32.1-39kg)	4273	365.9
Medium (39.1-45.5kg)	10207	391.8
Heavy (45.6-52kg)	8351	390.0
Other (over 52kg)	2947	377.6
<b>SQQ (25.5-45.5kg)</b>	<b>15414</b>	<b>380.1</b>
<b>Total</b>	<b>26833</b>	<b>382.4</b>

Below the table, there is a section for 'Cull Ewes' with a 'Total' column, which is partially visible at the bottom of the screenshot.



# GRAB YOURSELF A MINI HEALTH CHECK



- BLOOD PRESSURE CHECK
- BLOOD SUGAR TEST



**KNOW YOUR NUMBERS!**

Coast & Country Primary Care Network healthcare staff are at  
**HOLSWORTHY LIVESTOCK MARKET**  
on **WEDNESDAY**

**18<sup>th</sup> December 2024, 22<sup>nd</sup> January, and 19<sup>th</sup> February 2025.**  
We're New Year ready!

**Healthcare where YOU are!**



# ARE YOU A PART OF THE FARMING COMMUNITY?

## WE WANT TO HEAR FROM YOU!

# FARM WELL

Farmers and farm workers are an important part of our community. We understand that farming is a demanding profession and can be unpredictable.

We also know that accessing healthcare and advice is not always easy. We need you help to get a better understanding of the needs of the farming community when it comes to healthcare.

You can let us know your thoughts via the 'Farm Well' survey - simply scan the QR code on this poster to take part!

**SCAN HERE TO  
TAKE PART**



This survey is part of a University of Exeter preliminary consultation project being run by SPHERE (the School for Public Health Environments Research at Exeter).

This survey is totally anonymous. The findings will be used to inform a funding application. The findings will not be analysed and will not be used for publication.



University  
of Exeter





## READY MIXED CONCRETE

We supply for delivery and collection:

Ready mixed concrete

Liquid floor screeds

Dry screed

Sand & Aggregates

**QUALITY**

**ASSURED**

8-wheeled, 6-wheeled conveyor  
and 4-wheeled mini mix trucks available

For quotes, bookings and more information, please  
call us on 01288 362111 (option 2) or email us at  
[rmc@macplant-ltd.co.uk](mailto:rmc@macplant-ltd.co.uk)



BSI  
ACCREDITED  
BS EN 206  
BS 8500

Mac Crete  
Bridgerule Industrial Estate  
Holsworthy  
EX22 7EB



[www.macplant-ltd.co.uk](http://www.macplant-ltd.co.uk)

# LARK PLANT HIRE LTD

PLANT HIRE, HAULAGE & AGRICULTURAL  
CONTRACTORS



## FORAGING SERVICES

ALSO AVAILABLE  
AS REQUIRED

Triple Mowers  
Double Mowers  
Tedding  
50ft Rake  
30 ft Rake  
4 Silage Trailers  
Buckrake  
Loading Shovel



## LIME SPREADING

Two types of lime  
and sea sand for  
your  
spreading  
requirements

FREE soil testing!



## OVERSEEDING

For all herbal ley  
overseeding, grass,  
rape,  
wild bird seed and  
cover crops



All available for 2024 Season! Email: [office@larkplant.co.uk](mailto:office@larkplant.co.uk)

Call Office: 01409 211214

Ian: 07939 538902 or Rob: 07854 362450





## **Lely Collector - A revolutionary manure robot**

The Discovery Collector is specifically designed for barns with solid floors and can easily navigate in between the cows, the sorting gates and around the cubicle passages and waiting area.

Call Lely Center Holsworthy on 01409 413122 for more information



[www.lely.com/australia/lely/holsworthy/](http://www.lely.com/australia/lely/holsworthy/)



# Farms For Sale

# KIVELLS

[www.kivells.com](http://www.kivells.com)

## Tregaminion Manor Farm Morvah, Pendeen, Penzance

- Idyllic coastal setting
- Ring fenced farm in an Area of Outstanding Natural Beauty
- Multiple dwellings for income generation or multi-generational living
- Period farmhouse and two cottages
- Range of modern and traditional farm buildings
- Development opportunities with some planning consent in place
- In all some 118 acres
- EPC C, G & G.

**Guide Price: £2,500,000**

Holsworthy Farms & Land Department  
[farms@kivells.com](mailto:farms@kivells.com) | 01409 259547





# Farms For Sale

# KIVELLS

[www.kivells.com](http://www.kivells.com)

## Worthen Farm Pyworthy, Holsworthy, Devon

- Grassy ring fenced stock farm with 151 acres
- South facing three bedroom period farmhouse and adjoining two bedroom cottage (suitable for holiday letting)
- Two further traditional barns with potential for conversion, subject to planning
- Range of adaptable farm buildings
- Level and gently sloping pasture land
- EPC D & D

**Guide Price: £2,150,000**

Holsworthy Farms & Land Department  
[farms@kivells.com](mailto:farms@kivells.com) | 01409 259547



# Farms For Sale

# KIVELLS

[www.kivells.com](http://www.kivells.com)

## Higher Norley Farm Northlew, Okehampton

- Just over 93 acres of productive pasture land
- A useful range of farm buildings including 96 cubicles, loose housing, fodder store and workshop
- Wonderful far reaching views to Dartmoor
- For sale by Private Treaty.

**Guide Price: £1,100,000**

Holsworthy Farms & Land Department  
[farms@kivells.com](mailto:farms@kivells.com) | 01409 259547





# Development Site **For Sale**

# KIVELLS

[www.kivells.com](http://www.kivells.com)

## Development Site at Lower Newton Farm Zeal Monachorum, CREDITON, Devon

- Valuable residential development opportunity
- Range of agricultural buildings with planning permission for demolition and creation of three new build, detached four and three bedroom dwellings
- Potential under extension of Permitted Development Rights for retention and conversion of the existing buildings (Clarkson's Law – Maximum 10 dwellings), subject to planning
- Additional land available

**Guide Price: £450,000**

Exeter Farms & Land Department  
[simon.alford@kivells.com](mailto:simon.alford@kivells.com) | 01392 252262



Aerial view looking north west



# Land For Sale

# KIVELLS

[www.kivells.com](http://www.kivells.com)

## Land at Myrtle Cottage Farm

Alverdiscott, Barnstaple | Offers in Excess of £425,000



A cracking run of nearly 43 acres of pasture land, level and gently sloping with road frontage and excellent access.

Holworthy Farms & Land Agency  
[Farms@kivells.com](mailto:Farms@kivells.com) | 01409 259547

## Land at Stoke Canon

Exeter, Devon | Guide Price £375,000



A highly productive run of level arable and pastureland with livestock handling pens extending to just under 46 acres.

Exeter Farms & Land Department  
[simon.alford@kivells.com](mailto:simon.alford@kivells.com) | 01392 252262

## Land at Higher Coldrinnick Woods

Near Blisland, Bodmin | Guide Price £150,000



22.28 acres comprising ancient woodland, largely undisturbed for many hundreds of years, with a pretty stream boundary.

Liskeard Farms & Land Agency  
[liskeard@kivells.com](mailto:liskeard@kivells.com) | 01579 345543

## Land at Polzeath

Wadebridge, Cornwall | Guide Price £1,250,000



Just over 15 acres of prime farmland in a stunning location with long term development potential, subject to planning.

Holworthy Farms & Land Department  
[farms@kivells.com](mailto:farms@kivells.com) | 01409 259547

## Land at Southcombe

Northlew, Okehampton | Guide Price £130,000

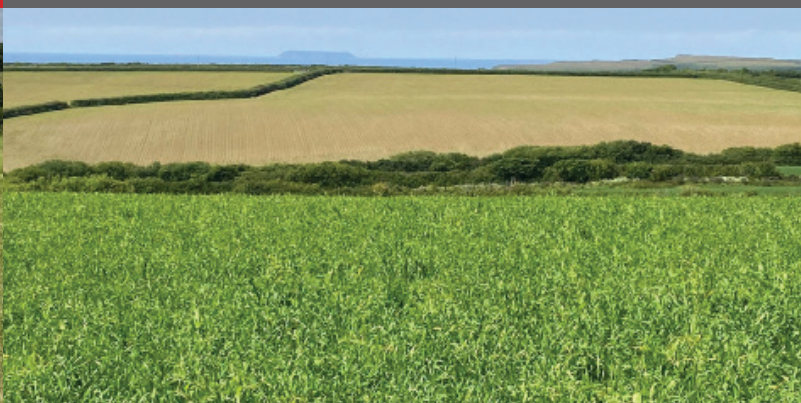


A block of approx. 19.14 acres of peacefully located pretty pasture and woodland, gently sloping and in three good sized enclosures with a natural water supply.

Holworthy Farms & Land Agency  
[Farms@kivells.com](mailto:Farms@kivells.com) | 01409 259547

## Land at Pipswell Cross

Morwenstow, Bude | Guide Price £290,000



Just under 35 acres of productive pasture and arable ground in a sought after farming area with road frontage and access and far-reaching views as far as Lundy Island.

Holworthy Farms & Land Agency  
[Farms@kivells.com](mailto:Farms@kivells.com) | 01409 259547



# Land For Sale

# KIVELLS

[www.kivells.com](http://www.kivells.com)

## Land at Yollaberry

Hatherleigh | Guide Price £120,000 - £140,000



Just over 9¾ acres of gently sloping pasture land in a stunning location with parish road frontage and lane access.

Holsworthy Farms & Land Agency  
[Farms@kivells.com](mailto:Farms@kivells.com) | 01409 259547

## Land at Higher Medrose

Delabole | Guide Price £40,000



For Sale by Formal Tender. Approximately 3.10 acres comprising a single enclosure of level pasture land.

Liskeard Farms & Land Department  
[mark.bunt@kivells.com](mailto:mark.bunt@kivells.com) | 01579 345543



# Land for Auction

## Wednesday 15th January, 7.00pm

# KIVELLS

[www.kivells.com](http://www.kivells.com)

Venue: Lifton Strawberry Fields, Lifton, Devon PL16 0DE

### Land North of Higher Medrose

Delabole | Auction Guide Price £50,000

For sale by public auction - Wednesday 15th January



Pre-application advice received for development with mains services assumed to be close by. Freehold with vacant possession upon completion.

Liskeard Farms & Land Department  
[mark.bunt@kivells.com](mailto:mark.bunt@kivells.com) | 01579 345543

### Land South of Higher Medrose

Delabole | Auction Guide Price £50,000

For sale by public auction - Wednesday 15th January



Pre-application advice received for development with mains services assumed to be close by. Freehold with vacant possession upon completion.

Liskeard Farms & Land Department  
[mark.bunt@kivells.com](mailto:mark.bunt@kivells.com) | 01579 345543

### Land at Lewdown

Lewdown, Okehampton | Auction Guide Price £100,000

For sale by public auction - Wednesday 15th January



Just over 10 acres of mainly level, south facing pasture land in a rural yet accessible location.

Holsworthy Farms & Land Department  
[farms@kivells.com](mailto:farms@kivells.com) | 01409 259547

### Land at Bursdon

Hartland, Bideford | Auction Guide Price £275,000

For sale by public auction - Wednesday 15th January



Just over 38 acres of gently sloping south facing pasture land including about 8 acres of conservation land in an accessible location with far-reaching views.

Holsworthy Farms & Land Department  
[farms@kivells.com](mailto:farms@kivells.com) | 01409 259547

### Land at Spekes Cross

Wembworthy, Chulmleigh | Auction Guide Price £50,000

For sale by public auction - Wednesday 15th January



2.84 acres of land which benefits from direct road access off an unnamed country road. The land, down to permanent grassland also benefits from a small field shelter.

Exeter Farms & Land Department  
[exeter@kivells.com](mailto:exeter@kivells.com) | 01392 252262

### Dumnonii Wood

Trelaske, Lewannick, Launceston | Auction Guide Price £15,000

For sale by public auction - Wednesday 15th January



Extending to approximately 4.61 acres, Dumnonii Woods comprises a block of gently sloping coniferous woodland, in a quiet rural setting.

Holsworthy Farms & Land Department  
[farms@kivells.com](mailto:farms@kivells.com) | 01409 259547



# Previous Auction Results

Wednesday 13th November

# KIVELLS

[www.kivells.com](http://www.kivells.com)

## Land at West Tosberry

Hartland, Bideford | Auction Guide Price £36,000

SOLD: £85,000



A pretty grass paddock extending to 1.88 acres with a stone and cob barn and far reaching views sea views towards Lundy Island. Possible development potential, subject to planning.

Holworthy Farms & Land Department  
[farms@kivells.com](mailto:farms@kivells.com) | 01409 259547

## Land and Buildings at Trebray

Altarnun, Launceston | Auction Guide Price £165,000

SOLD: £255,000



Just under 18 acres of grazing land with parish road frontage and access leading to a level yard with a useful range of agricultural and storage buildings.

Holworthy Farms & Land Department  
[farms@kivells.com](mailto:farms@kivells.com) | 01409 259547

# Farms Sale Agreed

# KIVELLS

[www.kivells.com](http://www.kivells.com)

## Keymelford Farm Buildings & Land Keymelford, Colebrook, Crediton, Devon



**Lot 1** - Agricultural buildings and yard area with surrounding extending to 0.41 acres.  
**Guide Price: £150,000**

**Lot 2** - Agricultural building with concrete pad and land surrounding extending to 0.41 acres.  
**Guide Price: £135,000**

**Lot 3** - A small grassland area extending to approximately 0.14 acres. **Guide Price: £25,000**

Exeter Farms & Land Agency  
[exeter@kivells.com](mailto:exeter@kivells.com) | 01392 252262

## Pheasantry Farm Chawleigh, Chulmleigh



**Lot 1** - Farm Bungalow, Gardens, Agricultural land extending to approximately 5.83 acres of land.  
**Guide Price: £125,000**

**Lot 2** - Agricultural Building together with approximately 5.96 acres of land.  
**Guide Price: £125,000**

**Guide Price as a Whole: £750,000**

Exeter Farms & Land Department  
[exeter@kivells.com](mailto:exeter@kivells.com) | 01392 252 262





# Farms Sale Agreed

# KIVELLS

[www.kivells.com](http://www.kivells.com)

## Dinnabroad Farm Port Isaac, North Cornwall

- In an unrivalled position on the North Cornish Coast
- Breathtaking 180 degree sea views to Port Isaac and Tintagel
- Privately set six bedroom traditional farmhouse with opportunities for renovation
- Attractive three bedroom cottage, used as a popular holiday let
- Range of outbuildings including some stone barns
- Over 140 acres of farmland and cliff



**Offer in the region of: £4,000,000**

Holsworthy Farms & Land Department  
[farms@kivells.com](mailto:farms@kivells.com) | 01409 259547



# Land Sale Agreed

# KIVELLS

[www.kivells.com](http://www.kivells.com)

## Land Forming Part Fursdon, Newtake, Foxhole, Waddons & Kingston Staverton, Totnes

For sale by private treaty as a whole or in 7 lots

A rare opportunity to purchase approximately 331.16 acres of immaculate rolling pasture land located on the northern fringes of the popular South Hams. Primarily south facing, the land is of level to sloping in topography, containing principally Grade 3 freely draining, slightly acidic loamy soils. The fields are divided into good sized, easily workable enclosures and complete with stock proof fencing and well-maintained hedgerows.

**LOT 1** : 91.73 acres of agricultural land known as Fursdon  
**Guide: £825,000**

**LOT 2**: 103.83 acres of agricultural land known as Newtake  
**Guide: £865,000**

**LOT 2A**: Newtake Paddocks totalling 4.63 acres of land.  
**Guide: £185,000**

**LOT 3**: 19.96 acres of agricultural land known as Foxhole.  
**Guide: £200,000**

**LOT 4**: 60.79 acres of agricultural land known as Waddons.  
**Guide: £550,000 **SOLD****

**LOT 5**: 36.09 acres of agricultural land known as Kingston.  
**Guide: £325,000 **SOLD****

**LOT 6**: 14.13 acres of agricultural land known as Waddons Meadow.  
**Guide: £145,000 **SOLD****

Exeter Farms & Land Department  
[ian.caunter@kivells.com](mailto:ian.caunter@kivells.com) | 01392 252262





# Land Sale Agreed

# KIVELLS

www.kivells.com

## Land at Wooldown

Marhamchurch, Bude | Guide Price £100,000



An attractive and very gently sloping pasture field extending to approx. 4.63 acres, well fenced with road frontage and good access.

Holsworthy Farms & Land Agency  
Farms@kivells.com | 01409 259547

## Land At Waterwell Lane

Christow, Exeter | Guide Price £95,000



3.34 acres with a garage and large agricultural building. The land also benefits from direct road access.

Exeter Farms & Land Department  
Exeter@kivells.com | 01392 252262

## Land at High Ridge Farm

North Tawton, Devon | Guide Price £340,000



A highly productive run of approx. 34 acres of level pasture land with planning permission for a 80ft x 40ft storage shed.

Exeter Farms & Land Department  
simon.alford@kivells.com | 01392 252262

## Land at West Vognacott & Honeycroft (Lot 1)

Chilsworthy, Holsworthy | Guide Price £345,000



Just under 55 acres of pasture and amenity land in a quiet, rural setting. Further land available (lots 2 & 3).

Holsworthy Farms & Land Agency  
Farms@kivells.com | 01409 259547

## Land at West Vognacott & Honeycroft (Lot 2)

Chilsworthy, Holsworthy | Guide Price £200,000



Some 29 acres of pasture land in a quiet rural, yet accessible location. Further land available as Lots 1 & 3.

Holsworthy Farms & Land Agency  
Farms@kivells.com | 01409 259547

## Land at West Vognacott & Honeycroft (Lot 3)

Chilsworthy, Holsworthy | Guide Price £245,000



Circa 25½ acres pasture land. with excellent amenity and biodiversity appeal. Further land available as Lots 1 & 2.

Holsworthy Farms & Land Agency  
Farms@kivells.com | 01409 259547

# Land Sale Agreed

# KIVELLS

[www.kivells.com](http://www.kivells.com)

## Land at Cransworth

St. Wenn, Bodmin | Guide Price £525,000



Approx. 57 acres of productive pasture land, gently sloping and south facing. Located in a rural location with stunning views, road frontage and access and natural water available.

Holworthy Farms & Land Agency  
[Farms@kivells.com](mailto:Farms@kivells.com) | 01409 259547

## Part Horralane

Highampton, Beaworthy | Guide Price £180,000



An excellent block of just over 20 acres of productive pasture land contained in three good sized fields, gently sloping and with mains water connected.

Holworthy Farms & Land Agency  
[Farms@kivells.com](mailto:Farms@kivells.com) | 01409 259547